

FRÖHLICHE WEIHNACHTEN

mit ERNST MOSCH

1. Flügelhorn in B

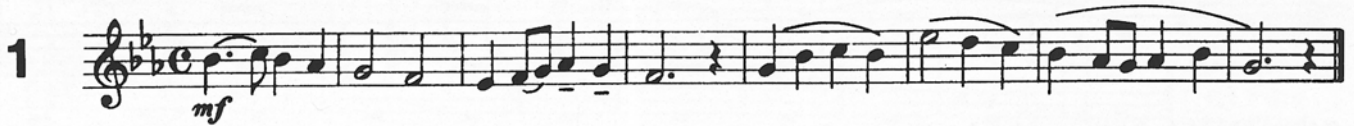
und seinen Original Egerländer Musikanten

Bearbeitung:
Gerald Weinkopf

Telefunken · Schallplatte Nr. 6.21053 A.F. · Cassette Nr. 4.21053 CH

Alle Jahre wieder (Friedrich Silcher)

(3 Strophen: 1.x Tutti; 2.x Flügelhorn 1+2, Pos. 1+2, Baß 1; 3.x Tutti)

**Leise rieselt der Schnee** (Eduard Ebel)

(3 Strophen: 1.x ohne Holz; 2.x Flügelhörner, B-Klarinetten, Posaunen + Bässe; 3.x Tutti)

**Es ist ein Ros' entsprungen** (Volksweise)

(3 Strophen: 1.x ohne Holz; 2.x Holz-Solo; 3.x Tutti)

**Still, still, still, weil's Kindlein schlafen will** (Volksweise)

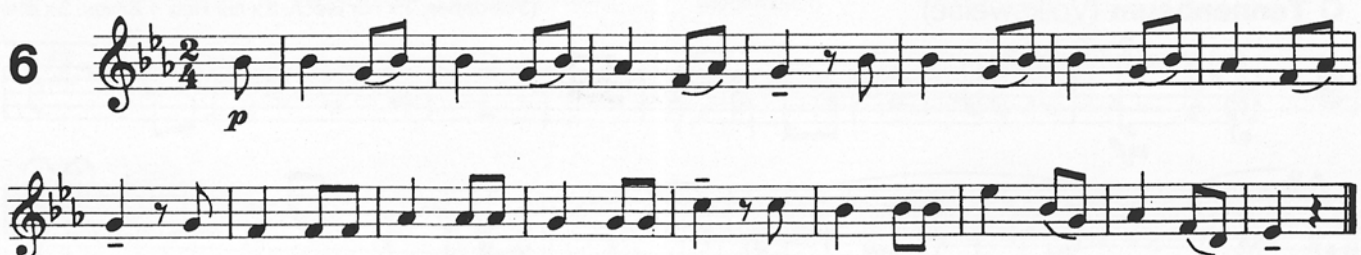
(3 Strophen: 1.x nur Holz; 2.x Flügelhörner + Bässe, ab Ziffer 1 Blech ohne Trompeten; 3.x Tutti)

**Kling, Glöckchen, klingelingeling** (Volksweise)

(3 Strophen: 1.x Tutti; 2.x Holz; 3.x Tutti)

**Ihr Kinderlein kommet** (Johann Abraham/Peter Schulz)

(3 Strophen: 1.x Tutti; 2.x Holz + 1. Baß; 3.x Tutti)



Vom Himmel hoch, da komm ich her (Martin Luther)

(3 Strophen: 1.x Tutti ohne Holz; 2.x Turmbläser = Ziffer 2; 3.x alle)

7

mf FINE 1.Trp. ②

Da Capo al Fine (tutti)

Detailed description: This block contains the musical score for the hymn 'Vom Himmel hoch, da komm ich her'. It consists of three staves of music. The first staff begins with a treble clef, a key signature of two flats (B-flat and E-flat), and a common time signature. The melody starts with a mezzo-forte (mf) dynamic. The second staff continues the melody and includes a 'FINE' marking and a circled '1' above a note. The third staff continues the melody and includes a circled '2' above a note. The instruction 'Da Capo al Fine (tutti)' is written to the right of the third staff.

Kommet ihr Hirten (Volksweise)

(3 Strophen: Ablauf in den Stimmen notiert)

8

SOLI (jedesmal blasen) ①

p Ten. SOLI Ten.

Detailed description: This block contains the musical score for 'Kommet ihr Hirten'. It consists of two staves of music. The first staff is in treble clef with a key signature of one sharp (F#) and a 3/4 time signature. It starts with a piano (p) dynamic and includes the instruction 'SOLI (jedesmal blasen)' and a circled '1' above a note. The second staff continues the melody and includes a circled '2' above a note, followed by 'Ten.' (Tutti) and 'SOLI Ten.' markings.

O Tannenbaum (Volksweise)

(3 Strophen: 1.x nur Blech; 2.x nur Holz + Bässe; 3.x alle)

9

2. x tacet

mf

Detailed description: This block contains the musical score for 'O Tannenbaum'. It consists of two staves of music. The first staff is in treble clef with a key signature of one sharp (F#) and a 3/4 time signature. It starts with a mezzo-forte (mf) dynamic and includes the instruction '2. x tacet'. The second staff continues the melody.

Schneeflöckchen, Weißbröckchen (Volksweise)

(4 Strophen: 1.x 2 Flügelhörner + Triangel; 2.x Holz + Bässe dazu; 3.x Hörner + Posaunen dazu; 4.x Tutti)

10

1.x nur einer blasen

p

1. alle 2. 3. FINE

Detailed description: This block contains the musical score for 'Schneeflöckchen, Weißbröckchen'. It consists of two staves of music. The first staff is in treble clef with a key signature of one flat (B-flat) and a 3/4 time signature. It starts with a piano (p) dynamic and includes the instruction '1.x nur einer blasen'. The second staff continues the melody and includes markings for '1. alle', '2.', '3.', and 'FINE'.

Stille Nacht, heilige Nacht (Franz Gruber)

(3 Strophen: 1.x ohne Holz; 2.x Flügelhörner + Bässe; 3.x Tutti)

11

mf

Detailed description: This block contains the musical score for 'Stille Nacht, heilige Nacht'. It consists of two staves of music. The first staff is in treble clef with a key signature of one flat (B-flat) and a 6/8 time signature. It starts with a mezzo-forte (mf) dynamic. The second staff continues the melody.

O du fröhliche, o du selige (Volksweise)

(3 Strophen: 1.x Tutti; 2.x Posaunen + Bässe; 3.x Tutti, letzte 8 Takte wiederholen)

12

mf

Detailed description: This block contains the musical score for 'O du fröhliche, o du selige'. It consists of two staves of music. The first staff is in treble clef with a key signature of two flats (B-flat and E-flat) and a common time signature. It starts with a mezzo-forte (mf) dynamic. The second staff continues the melody.