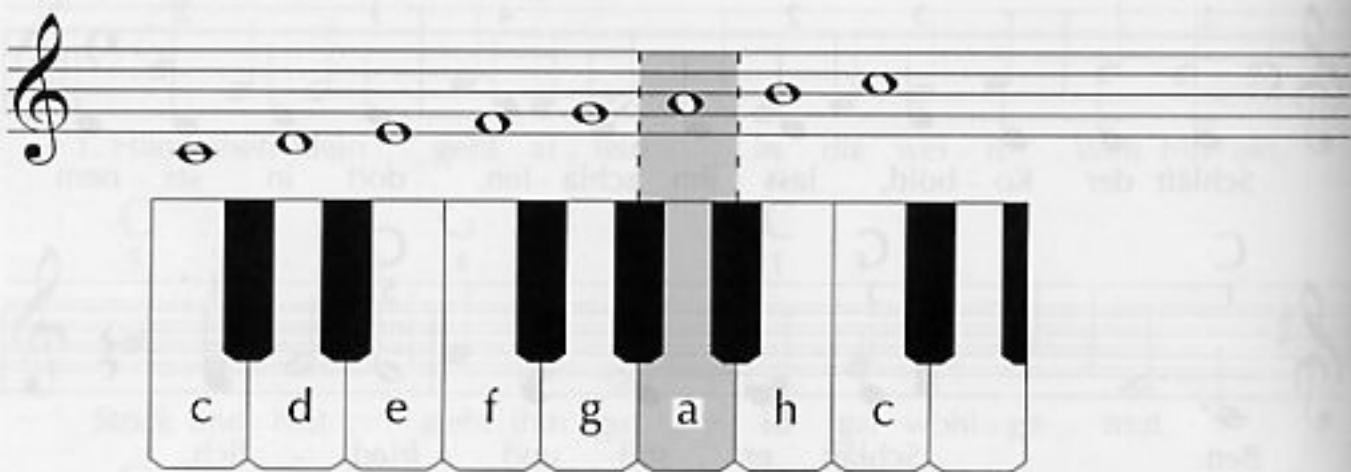


# Ein neuer Ton

Erinnern wir uns! Die Stammtönereihe lautet:



unser neuer Ton

Der Fünftonraum  $c^1 - g^1$  wird um den neuen Ton  $a^1$  erweitert. Deswegen müssen wir jetzt sehr genau den Fingersatz beachten. Wir versuchen natürlich, die Hand so lange wie möglich in der Fünftonraumposition zu halten.

## London Bridge

12 33

aus England

The first line of musical notation for 'London Bridge' is shown. It consists of four measures. The first measure has a C chord above it and notes C4, D4, E4. The second measure has a G chord above it and notes F4, G4, A4. The third measure has a C chord above it and notes G4, F4, E4. The fourth measure has a C chord above it and notes D4, C4. The lyrics are: Lon-don Bridge is fall - ing down, fall - ing down, fall - ing down.

The second line of musical notation for 'London Bridge' is shown. It consists of four measures. The first measure has a C chord above it and notes C4, D4, E4. The second measure has a G chord above it and notes F4, G4, A4. The third measure has a C chord above it and notes G4, F4, E4. The fourth measure has a C chord above it and notes D4, C4. The lyrics are: Lon-don Bridge is fall - ing down, my fair La - dy.