

# Panis Angelicus

Solo Flute - Oboe - Clarinet - Bassoon - Alto Saxophone - Trumpet - Tenor / Bass Trombone  
Euphonium - Tuba - E♭ & B♭ Bass - Violin - Viola - Violoncello - Contrabass  
& Wind Band / Concert Band / Harmonie / Blasorchester

Arr.: Jérôme Naulais

## Cesar Franck

EMR 11113

- |   |                                     |   |  |
|---|-------------------------------------|---|--|
| 1 | Score                               | 2 | 1 <sup>st</sup> Trombone $\text{♩} + \text{♯}$ |
| 1 | Piccolo                             | 2 | 2 <sup>nd</sup> Trombone $\text{♩} + \text{♯}$ |
| 4 | 1 <sup>st</sup> Flute               | 1 | Bass Trombone $\text{♩} + \text{♯}$            |
| 4 | 2 <sup>nd</sup> Flute               | 2 | Baritone $\text{♩} + \text{♯}$                 |
| 1 | Oboe (optional)                     | 2 | E♭ Bass $\text{♩}$                             |
| 1 | Bassoon (optional)                  | 2 | B♭ Bass $\text{♩}$                             |
| 1 | E♭ Clarinet (optional)              | 2 | Tuba $\text{♩}$                                |
| 5 | 1 <sup>st</sup> B♭ Clarinet         | 1 | String Bass (optional)                         |
| 4 | 2 <sup>nd</sup> B♭ Clarinet         | 1 | Timpani  |
| 4 | 3 <sup>rd</sup> B♭ Clarinet         | 1 | 1 <sup>st</sup> Percussion                     |
| 1 | B♭ Bass Clarinet (optional)         | 1 | 2 <sup>nd</sup> Percussion                     |
| 1 | B♭ Soprano Saxophone (optional)     |   |  |
| 2 | 1 <sup>st</sup> E♭ Alto Saxophone   |   |  |
| 2 | 2 <sup>nd</sup> E♭ Alto Saxophone   |   |  |
| 2 | 1 <sup>st</sup> B♭ Tenor Saxophone  |   |  |
| 2 | 2 <sup>nd</sup> B♭ Tenor Saxophone  |   |  |
| 1 | E♭ Baritone Saxophone (optional)    |   |  |
| 1 | E♭ Trumpet / Cornet (optional)      |   |  |
| 3 | 1 <sup>st</sup> B♭ Trumpet / Cornet |   |  |
| 3 | 2 <sup>nd</sup> B♭ Trumpet / Cornet |   |  |
| 3 | 3 <sup>rd</sup> B♭ Trumpet / Cornet |   |  |
| 2 | 1 <sup>st</sup> F & E♭ Horn         |   |  |
| 2 | 2 <sup>nd</sup> F & E♭ Horn         |   |  |
| 2 | 3 <sup>rd</sup> F & E♭ Horn         |   |  |

### Special Parts

- |   |  |
|---|--|
| 1 | 1 <sup>st</sup> B♭ Trombone $\text{♩}$ |
| 1 | 2 <sup>nd</sup> B♭ Trombone $\text{♩}$ |
| 1 | B♭ Bass Trombone $\text{♩}$            |
| 1 | B♭ Baritone $\text{♩}$                 |
| 1 | E♭ Tuba $\text{♩}$                     |
| 1 | B♭ Tuba $\text{♩}$                     |

### Fanfare Parts

- |   |                            |
|---|----------------------------|
| 2 | 1 <sup>st</sup> Flugelhorn |
| 2 | 2 <sup>nd</sup> Flugelhorn |
| 2 | 3 <sup>rd</sup> Flugelhorn |

Print & Listen  
Drucken & Anhören  
Imprimer & Ecouter



www.reift.ch



EDITIONS MARC REIFT

Case Postale 308 • CH-3963 Crans-Montana (Switzerland)

Tel. +41 (0) 27 483 12 00 • Fax +41 (0) 27 483 42 43 • E-Mail : [info@reift.ch](mailto:info@reift.ch) • [www.reift.ch](http://www.reift.ch)

Recorded on CD - Auf CD aufgenommen - Enregistré sur CD

# Panis Angelicus

Cesar Franck

Arr.: Jérôme Naulais

## BASSOON SOLO



Poco Lento

12



17



23



rit. a tempo

28



38



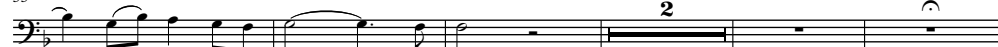
44



50



55



rit. a tempo

rall.

EMR 11113

© COPYRIGHT BY EDITIONS MARC REIFT CH-3963 CRANS-MONTANA (SWITZERLAND)  
ALL RIGHTS RESERVED - INTERNATIONAL COPYRIGHT SECURED

www.reift.ch



# Panis Angelicus

Cesar Franck  
Arr.: Jérôme Naulais

**Poco Lento**

2 3 4 5 6 7

Solo in C

Piccolo

1st & 2nd Flute

Oboe

Bassoon

Clarinet in E $\flat$

1st B $\flat$  Clarinet

2nd B $\flat$  Clarinet

3rd B $\flat$  Clarinet

B $\flat$  Bass Clarinet

1st E $\flat$  Alto Saxophone

2nd E $\flat$  Alto Saxophone

1st & 2nd B $\flat$  Tenor Saxophone

E $\flat$  Baritone Saxophone

1st B $\flat$  Trumpet / Cornet

2nd B $\flat$  Trumpet / Cornet

3rd B $\flat$  Trumpet / Cornet

1st F Horn

2nd F Horn

3rd F Horn

1st Trombone

2nd Trombone

Bass Trombone

Baritone

Tuba in C

String Bass (optional)

Timpani

1st Percussion

2nd Percussion

*Suspended Cymbals*

*Gluck.* *(Mallets)*

Solo in C

Picc.

Fl.

Ob.

Bsn.

E $\flat$  Cl.

Cl. 1

Cl. 2

Cl. 3

B. Cl.

A. Sax. 1

A. Sax. 2

T. Sax.

B. Sax.

Tpt. 1

Tpt. 2

Tpt. 3

Hn. 1

Hn. 2

Hn. 3

Tbn. 1

Tbn. 2

B. Tbn.

Bar.

Tuba

Str. B.

Timp.

Perc. 1

Perc. 2

15 16 17 18 19 20 21

Solo in C

Picc. *mp* *mf*

Fl. *mp* *mf*

Ob. *mf* *mp*

Bsn. *mp*

E♭ Cl. *mp* *mf*

Cl. 1 *mf* *mp*

Cl. 2 *mf* *mp*

Cl. 3 *mf* *mp*

B. Cl. *mf* *mp*

A. Sax. 1 *mf* *mp*

A. Sax. 2 *mf* *mp*

T. Sax. *mf* *mp*

B. Sax. *mf* *mp*

Tpt. 1

Tpt. 2

Tpt. 3

Hn. 1 *mf*

Hn. 2 *mf*

Hn. 3 *mf*

Tbn. 1 *mf* *mp*

Tbn. 2 *mf* *mp*

B. Tbn. *mf* *mp*

Bar. *mp*

Tuba *mf* *mp*

Str. B. *mf* *mp*

Timp. *mp*

Perc. 1

Perc. 2 *mp* *mf*

22 23 24 25 26 27

Solo in C

Picc. *mp*

Fl. *mp*

Ob. *mf*

Bsn. *mf*

E♭ Cl. *mp*

Cl. 1 *mf* *mp*

Cl. 2 *mf* *mp*

Cl. 3 *mf* *mp*

B. Cl. *mf* *mp*

A. Sax. 1 *mp* *mf*

A. Sax. 2 *mp* *mf*

T. Sax. *mp* *mf*

B. Sax. *mp*

Tpt. 1 *mp* *mf*

Tpt. 2 *mp* *mf*

Tpt. 3 *mp* *mf*

Hn. 1 *mp* *mf*

Hn. 2 *mp* *mf*

Hn. 3 *mp* *mf*

Tbn. 1 *mp* *mf*

Tbn. 2 *mp* *mf*

B. Tbn. *mp* *mf*

Bar. *mp* *mf*

Tuba *mp* *mf*

Str. B. *mp* *mf*

Timp.

Perc. 1

Perc. 2 *mp*

28 29 30 31 32 33 34

Solo in C *mp* *p* *f*

Picc. *mf*

Fl. *mf*

Ob. *mp* *mf* *mf*

Bsn. *mp* *mf* *mf*

E♭ Cl. *mf*

Cl. 1 *mp* *mf* *mf*

Cl. 2 *mp* *mf* *mf*

Cl. 3 *mp* *mf* *mf*

B. Cl. *mp* *mf* *mf*

A. Sax. 1 *mp* *mf* *mf*

A. Sax. 2 *mp* *mf* *mf*

T. Sax. *mp* *mf* *mf*

B. Sax. *mp* *mf* *mf*

Tpt. 1 *mp* *mf* *mf*

Tpt. 2 *mp* *mf* *mf*

Tpt. 3 *mp* *mf* *mf*

Hn. 1 *mp* *mf* *mf*

Hn. 2 *mp* *mf* *mf*

Hn. 3 *mp* *mf* *mf*

Tbn. 1 *mp* *mf* *mf*

Tbn. 2 *mp* *mf* *mf*

B. Tbn. *mp* *mf* *mf*

Bar. *mp* *mf* *mf*

Tuba *mp* *mf* *mf*

Str. B. *mp* *mf* *mf*

Timp. *mf*

Perc. 1

Perc. 2 *mf*

*mf* *mf* *mf*

*rit.* *a tempo*

35 36 37 38 39 40 41

Solo in C *mf* *f*

Picc. *mf*

Fl. *mf*

Ob. *mf* *mf*

Bsn. *mf* *mf*

E♭ Cl. *mf*

Cl. 1 *mf* *mf*

Cl. 2 *mf* *mf*

Cl. 3 *mf* *mf*

B. Cl. *mf* *mf*

A. Sax. 1 *mf* *mf*

A. Sax. 2 *mf* *mf*

T. Sax. *mf* *mf*

B. Sax. *mf* *mf*

Tpt. 1 *mf* *mf*

Tpt. 2 *mf* *mf*

Tpt. 3 *mf* *mf*

Hn. 1 *mf* *mf*

Hn. 2 *mf* *mf*

Hn. 3 *mf* *mf*

Tbn. 1 *mf* *mf*

Tbn. 2 *mf* *mf*

B. Tbn. *mf* *mf*

Bar. *mf* *mf*

Tuba *mf* *mf*

Str. B. *mf* *mf*

Timp. *mf*

Perc. 1

Perc. 2 *mf*

*mf* *mf* *mf*

42 43 44 45 46 47 48

www.reift.ch

EMR 11113

## WIND BAND – HARMONIE – BLASORCHESTER

## ARRANGEMENT OF THE CLASSIC

|            |   |                                    |
|------------|---|------------------------------------|
| EMR 1634   | Adagietto From Symphony N° 5  | MAHLER (Mortimer)                  |
| EMR 1978   | Adagio For Strings (Platoon)  | BARBER (Mortimer)                  |
| EMR 1858   | Adagio in C minor Op. 13  | BEETHOVEN (Mortimer)               |
| EMR 1667   | Also sprach Zarathustra   | STRAUSS (Mortimer)                 |
| EMR 10136  | Anvil Chorus  | VERDI (Hendriks)                   |
| EMR 10137  | Anvil Chorus (Chorus SATB)  | VERDI (Hendriks)                   |
| EMR 10381  | Ave Maria   | SCHUBERT (Naulais)                 |
| EMR 10430  | Ave Maria (Chorus SATB)   | SCHUBERT (Naulais)                 |
| EMR 10429  | Ave Maria (Solo Voice)  | SCHUBERT (Naulais)                 |
| EMR 1389   | Back To Bach  | Arr.: MORTIMER                     |
| EMR 10410  | Badinerie (Flute Solo)  | BACH (Naulais)                     |
| EMR 1860   | Barcarole "The Tales of Hoffmann"   | OFFENBACH (Mortimer)               |
| EMR 1393   | Best Of 1812 (The)  | TCHAIKOVSKY (Richards)             |
| EMR 1871   | Capriccio Italien   | TCHAIKOVSKY (Schneiders)           |
| EMR 10359  | Caprice N° 24   | PAGANINI (King)                    |
| EMR 10384  | Caro mio ben  | GIORDANI (Naulais)                 |
| EMR 10461  | Caro mio ben (Chorus SATB)  | GIORDANI (Naulais)                 |
| EMR 10460  | Caro mio ben (Solo Voice)   | GIORDANI (Naulais)                 |
| EMR 10140  | Chorus Of Hebrew Slaves   | VERDI (Hendriks)                   |
| EMR 10141  | Chorus Of Hebrew Slaves (Chorus SATB)                                     | VERDI (Hendriks)                   |
| EMR 10307  | Chorus Of Hebrew Slaves (Solo)  | VERDI (Oliver)                     |
| EMR 10282  | Chorus Of Hebrew Slaves (Pan Flute Solo)                                  | VERDI (Oliver)                     |
| EMR 10091  | Cielo Andaluz   | NARRO (Hendriks)                   |
| EMR 10269  | Concerto in C (Flute Solo)  | VIVALDI (Mortimer)                 |
| EMR 10269  | Concerto in C (Piccolo Solo)  | VIVALDI (Mortimer)                 |
| EMR 10377  | Csardas (Accordion Solo)  | MONTI (Reift)                      |
| EMR 1261   | Csardas (Version C minor) (Solo)  | MONTI (Reift)                      |
| EMR 10147  | Csardas (Version D minor) (Solo)  | MONTI (Reift)                      |
| EMR 10346  | Csardas Fantasy   | MONTI (Richards)                   |
| EMR 10383  | Dance of the Comedians  | SMETANA (Mortimer)                 |
| EMR 10112  | Die Fledermaus - Overture   | STRAUSS (Sip)                      |
| EMR 1653   | Ebben? .. Ne andro lontano (Diva)   | CATALANI (Mortimer)                |
| EMR 1156   | Elsa's Procession To The Cathedral  | WAGNER (Mortimer)                  |
| EMR 10105  | Entr'acte (Carmen)  | BIZET (Sip)                        |
| EMR 10210  | Entry Of The Queen Of Sheeba  | HÄNDEL (Richards)                  |
| EMR 1990   | España  | CHABRIER (Schneiders)              |
| EMR 10049  | Festmusik der Stadt Wien  | STRAUSS (King)                     |
| EMR 10348  | Flight Of The Bumble-Bee  | RIMSKY-KORSAKOV (Oliver)           |
| EMR 10493  | Flight Of The Bumble-Bee (Accordion Solo)                                 | RIMSKY-KORSAKOV (Andrews)          |
| EMR 10671  | Flight Of The Bumble-Bee (Clarinet Solo)                                  | RIMSKY-KORSAKOV (GOUNOD (Mortimer) |
| EMR 10213  | Funeral March Of A Marionette   | CHOPIN (Sip)                       |
| EMR 1962   | Gioconda giocosa  | PONCHIELLI (Tailor)                |
| EMR 1943   | Gipsy Airs (Solo)   | SARASATE (Dokshiter)               |
| EMR 10206  | Gipsy Airs (Violin Solo)  | SARASATE (Mortimer)                |
| EMR 1965   | Gipsy Fantasy   | SARASATE (Tailor)                  |
| EMR 1086   | Highlights From Carmen  | BIZET (Mortimer)                   |
| EMR 1581   | Highlights From Carmen (Gipsy Song-Prelude-Habanera-Seguidilla-Entr'acte) | BIZET (Mortimer)                   |
| EMR 1983   | Hora Staccato   | DINICU (King)                      |
| EMR 10280  | Im Volkston   | GRIEG (Andrews)                    |
| EMR 10386  | Introduction, Theme and Variations (Clarinet Solo)                        | ROSSINI (Oliver)                   |
| EMR 10117  | Jesu, Joy of man's desiring   | BACH (Mortimer)                    |
| EMR 10117C | Jesu, Joy of man's desiring (Chorus SATB)                                 | BACH (Mortimer)                    |
| EMR 10354  | La Danza  | ROSSINI (King)                     |
| EMR 1638   | La forza del destino  | VERDI (Mortimer)                   |
| EMR 10481  | La Pén  | DUKAS (Oliver)                     |
| EMR 1654   | Lacrimosa & Dies Irae (Amadeus)   | MOZART (Mortimer)                  |
| EMR 1853   | Largo Symphony No 9 "The New World"                                       | DVORAK (Mortimer)                  |
| EMR 1660   | Lascia ch'io pianga (Farinelli)   | HÄNDEL (Mortimer)                  |
| EMR 1735   | Liebestraum   | LISZT (Mortimer)                   |
| EMR 10111  | Light Cavalry - Overture  | MOZART (Sip)                       |
| EMR 10254  | Marche Militaire  | SCHUBERT (Saurer)                  |
| EMR 10266  | Mars  | HOLST (Mortimer)                   |
| EMR 1845   | Mattinata   | LEONCAVALLO                        |
| EMR 10635  | Meditation From Thais (Solo)  | MASSENET (Mortimer)                |
| EMR 1855   | Morning Mood  | GRIEG (Mortimer)                   |
| EMR 1420   | Moscow Nights   | TRADITIONAL (Richards)             |
| EMR 1574   | Moscow Nights (Chorus SATB)   | TRADITIONAL (Richards)             |
| EMR 10347  | Moto Perpetuo   | PAGANINI (Mortimer)                |
| EMR 10128  | Nabucco - Overture  | VERDI (Sip)                        |
| EMR 1050   | Nessun Dorma  | PUCCINI (Mortimer)                 |
| EMR 1639   | Night On The Bare Mountain  | MUSSORGSKY (Mortimer)              |
| EMR 10158  | Ode To Joy  | BEETHOVEN (Richards)               |
| EMR 10156  | Ode To Joy (Chorus SATB)  | BEETHOVEN (Richards)               |
| EMR 10156M | Ode To Joy (Male Chorus)  | BEETHOVEN (Richards)               |
| EMR 1085   | Overture 1812   | TCHAIKOVSKY (Mortimer)             |
| EMR 1132   | Overture in D minor   | HÄNDEL (Wüthrich)                  |

|            |   |                         |
|------------|---|-------------------------|
| EMR 10498  | Panis Angelicus   | FRANCK (Naulais)        |
| EMR 10385  | Panis Angelicus (Chorus SATB)   | FRANCK (Naulais)        |
| EMR 10497  | Panis Angelicus (Solo Voice)  | FRANCK (Naulais)        |
| EMR 10351  | Plaisir d'amour   | MARTINI (Richards)      |
| EMR 10352  | Plaisir d'amour (Chorus SATB)   | MARTINI (Richards)      |
| EMR 10353  | Plaisir d'amour (Solo Voice)  | MARTINI (Richards)      |
| EMR 1856   | Poco Allegretto From "Symphony No. 3"   | BRAHMS (Mortimer)       |
| EMR 1854   | Polovstian Dances   | BORDINE (Mortimer)      |
| EMR 10123  | Pomp And Circumstance Nr. 1   | ELGAR (Hendriks)        |
| EMR 10124  | Pomp And Circumstance Nr. 1 (Chorus SATB)   | ELGAR (Hendriks)        |
| EMR 10108  | Procession Of The Nobles (Opera Mlada)  | RIMSKY-KORSAKOV (Sip)   |
| EMR 10273  | Rhapsody in Blue (Clarinet Solo)  | GERSHWIN (Dokshiter)    |
| EMR 10270  | Rhapsody in Blue (Trumpet Solo)   | GERSHWIN (Dokshiter)    |
| EMR 1872   | Romance   | TCHAIKOVSKY (Mortimer)  |
| EMR 10149  | Ruslan and Ludmilla   | GLINKA (Mortimer)       |
| EMR 1976   | Russian Sailors Dance   | GRIERE (Gourlay)        |
| EMR 1637   | Saraband & Trio (Barry Lyndon)  | HÄNDEL / SCHUBERT       |
| EMR 1859   | Scheherazade  | RIMSKY-KORSAKOV         |
| EMR 1754   | Serenade  | SCHUBERT (Schneiders)   |
| EMR 1051   | Siegfrieds Trauermarsch   | WAGNER (Mortimer)       |
| EMR 10204  | Sinfonia Pastorella (Alphorn in F)  | MOZART (Richards)       |
| EMR 10205  | Sinfonia Pastorella (Alphorn in Gb)   | MOZART (Richards)       |
| EMR 1873   | Slavonic Dance  | DVORAK (Tailor)         |
| EMR 1857   | Solvejg's Song  | GRIEG (Mortimer)        |
| EMR 10634  | Sonata in D (Duet)  | FRANCESCINI (Andrews)   |
| EMR 10300  | Spanish Dance   | GRANADOS (Richards)     |
| EMR 10129  | The Barber Of Seville - Overture  | ROSSINI (Sip)           |
| EMR 1393   | The Best Of 1812  | TCHAIKOVSKY (Richards)  |
| EMR 10803  | The Entry Of The King (Lohengrin)   | WAGNER (Moren)          |
| EMR 1265   | The Flight Of The Bumble Bee (Solo)   | RIMSKY-KORSAKOV (Reift) |
| EMR 1263   | The Flight Of The Bumble Bee (Solo)   | RIMSKY-KORSAKOV (Reift) |
| EMR 10130  | The Flying Dutchman - Overture  | WAGNER (Mortimer)       |
| EMR 10230  | The Four Seasons - I. Spring  | VIVALDI (Mortimer)      |
| EMR 10231  | The Four Seasons - II. Summer   | VIVALDI (Mortimer)      |
| EMR 10232  | The Four Seasons - III. Autumn  | VIVALDI (Mortimer)      |
| EMR 10233  | The Four Seasons - IV. Winter   | VIVALDI (Mortimer)      |
| EMR 1048   | The Great Gate of Kiev  | MOUSSORGSKY (Mortimer)  |
| EMR 1846   | The Last Rose Of Summer   | FLOTOW (Mortimer)       |
| EMR 10037  | The Lost Chord  | SULLIVAN (Richards)     |
| EMR 10539  | The Lost Chord (Chorus SATB)  | SULLIVAN (Richards)     |
| EMR 10107  | The Magic Flute - Overture  | MOZART (Sip)            |
| EMR 10110  | The Marriage Of Figaro - Overture   | MOZART (Sip)            |
| EMR 10113  | The Minute Waltz (Solo)   | CHOPIN (Sip)            |
| EMR 1870   | The Moldau (Vltava)   | SMETANA (Mortimer)      |
| EMR 10804  | The Sorcerer's Apprentice   | DUKAS (Mortimer)        |
| EMR 10380  | Tocatta   | WIDOR (Mortimer)        |
| EMR 1421   | Tosca - Final Act I   | PUCCINI (Mortimer)      |
| EMR 10125  | Triumphal Scene From Aida   | VERDI (Hendriks)        |
| EMR 10126  | Triumphal Scene From Aida (Chorus SATB)   | VERDI (Hendriks)        |
| EMR 10034  | Triumphs Of Tchaikovsky   | TCHAIKOVSKY (Richards)  |
| EMR 1464   | Tuneful Tchaikovsky   | TCHAIKOVSKY (Mortimer)  |
| EMR 1278   | Viva Verdi (Il Trovatore - La Traviata - Rigolletto - Nabucco - Aida)               | VERDI (Mortimer)        |
| EMR 1582   | Viva Verdi (Il Trovatore - La Traviata - Rigolletto - Nabucco - Aida) (Chorus SATB) | VERDI (Mortimer)        |
| EMR 1582M  | Viva Verdi (Il Trovatore - La Traviata - Rigolletto - Nabucco - Aida) (Male Chorus) | VERDI (Mortimer)        |
| EMR 1797   | Waltz No. 2   | SHOSTAKOVICH (          |
| EMR 10318  | Wiegenlied  | BRAHMS (Naulais)        |
| EMR 10318C | Wiegenlied (Chorus SATB)  | BRAHMS (Naulais)        |
| EMR 10318V | Wiegenlied (Solo Voices)  | BRAHMS (Naulais)        |
| EMR 10740  | Zirkus Renz (Accordion Solo)  | PETER (King)            |
| EMR 10142  | Zirkus Renz (Xylophone Solo)  | PETER (King)            |

**A World of Music...**

**PRINT & LISTEN  
DRUCKEN & ANHÖREN  
IMPRIMER & ECOUTER**

**www.reift.ch**