

Sonata N° 1

B^b Major

Alto Saxophone & Piano (Organ)

Arr.: John Glenesk Mortimer

Antonio Vivaldi

EMR 323E

Sonata No. I in B^b major

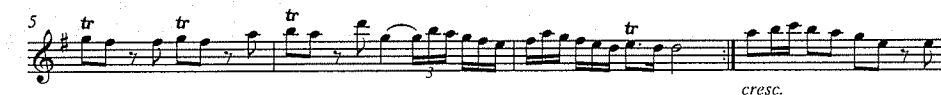
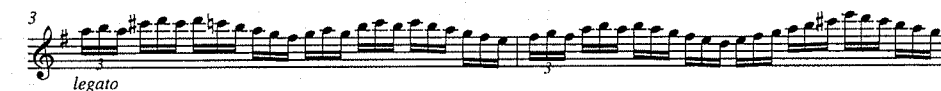
Antonio Vivaldi
(1678-1741)

Arr.: John Glenesk Mortimer

ALTO SAXOPHONE in E^b



Largo ♩ = 90



EMR 323

© COPYRIGHT 1997 BY EDITIONS MARC REIFT CH-3963 CRANS-MONTANA (SWITZERLAND) - ALL RIGHTS RESERVED

Sonata No. I in B \flat

Antonio Vivaldi
(1678-1741)

Arr.: John Glenesk Mortimer



Photocopying
is illegal!

Largo $\text{♩} = 90$

Measures 1-2 of the first system. Treble clef, bass clef, piano (*p*).

Measures 3-4 of the first system. Treble clef, bass clef, piano (*p*), *legato*, triplet (*3*).

Measures 5-8 of the first system. Treble clef, bass clef, piano (*p*), *legato*, trills (*tr*), triplet (*3*), crescendo (*cresc.*).

Measures 9-11 of the first system. Treble clef, bass clef, mezzo-forte (*mf*), crescendo (*cresc.*), trill (*tr*).

4

Measures 12-14 of the second system. Treble clef, bass clef, forte (*f*), trill (*tr*), triplet (*3*).

Measures 15-17 of the second system. Treble clef, bass clef, piano (*p*), crescendo (*cresc.*).

Measures 18-20 of the second system. Treble clef, bass clef, forte (*f*), trills (*tr*), crescendo (*cresc.*).

Allegro $\text{♩} = 138+$

Measures 21-23 of the second system. Treble clef, bass clef, forte (*f*).