

TUBA

To Tommy Johnson

Concerto

SONATA  
for Tuba and Piano

I.

Bruce Broughton (1916)

Allegro Moderato  $\text{♩} = 138$

10

①

mf

②

③

f

④

9

ABEL MUSIKVERLAG  
In Österreich zu beziehen bei:  
A-6884 Dornbirn - Fax 0551077005 - E-Mail: info@abel.at  
Bestell-Hotline: 0551077000  
Alles online unter: [www.abel.at](http://www.abel.at)

**TUBA**

⑤<sup>2</sup>

Handwritten musical score for the bass line of "The Rose Tree". The notation is on a single staff with a treble clef and a key signature of one sharp (F#). The melody consists of several measures, including a triplet of eighth notes (G4, A4, B4) and a half note (C5). The score includes dynamic markings such as *p* (piano), *f* (forte), and *p subito* (piano subito). There are also performance instructions like "basso" and "f" written below the staff.

Bestell-Hotline  
A-6884 Dornbirn - Fax 05572 2222  
Alles online unter [www.musik-schmid.at](http://www.musik-schmid.at)  
In Österreich zu

beziehen bei:  
**ABEL**  
 MUSIKVERLAG  
 05510/7005 - E-Mail: info@abel-mv.de  
 05510/7774  
 unter: [www.abel-mv.de](http://www.abel-mv.de)

The image shows a musical score for the song "The Rose Tree". It consists of two staves. The top staff is for the vocal melody, written in G major (one sharp) and 4/4 time. It begins with a treble clef and a key signature of one sharp (F#). The melody starts on G4, moves to A4, then B4, and continues with various intervals. There are dynamic markings like *f* (forte) and *mf* (mezzo-forte). The bottom staff is for the piano accompaniment, written in the same key and time. It begins with a bass clef. The left hand plays a steady eighth-note pattern, while the right hand plays chords and single notes. There are also dynamic markings like *f* and *mf*. The score is labeled "The Rose Tree" at the top right. The number "9" is circled in the bottom staff, likely indicating a measure number or a specific musical feature.

The musical score for 'The Rose Tree' is presented in two systems. The first system is in 4/4 time, featuring a treble clef and a key signature of one sharp (F#). It begins with a whole rest, followed by a half rest, and then a series of eighth and sixteenth notes. A forte (f) dynamic marking is placed below the first measure of the second system. The second system is in 3/4 time, featuring a bass clef and a key signature of one sharp (F#). It begins with a half note, followed by a quarter note, and then a series of eighth and sixteenth notes. A forte (f) dynamic marking is placed below the first measure of the second system. The score concludes with a final measure in 3/4 time.

The second system of the handwritten musical score for 'The Rose Tree'. It consists of two staves. The upper staff continues the melody from the first system, featuring eighth and sixteenth notes. The lower staff provides a harmonic accompaniment, primarily using quarter and eighth notes. The notation is written in a cursive, handwritten style on aged paper.

⑩

The Girl Who Was Too Good to Me

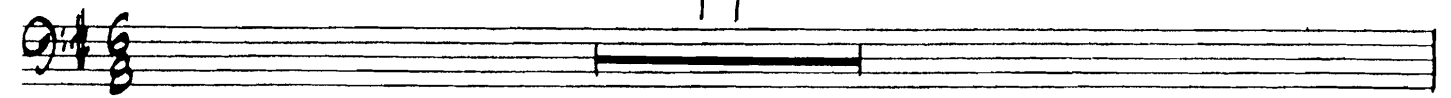
Handwritten musical score for a song. The score is written on two staves. The first staff begins with a treble clef, a key signature of one sharp (F#), and a 4/4 time signature. The melody is written in a single line. The second staff begins with a bass clef, a key signature of one sharp (F#), and a 4/4 time signature. The bass line is written in a single line. The lyrics 'The Girl Who Was Too Good to Me' are written below the second staff. The score is numbered 10 in a circle at the beginning of the first staff.

TUBA  
III.

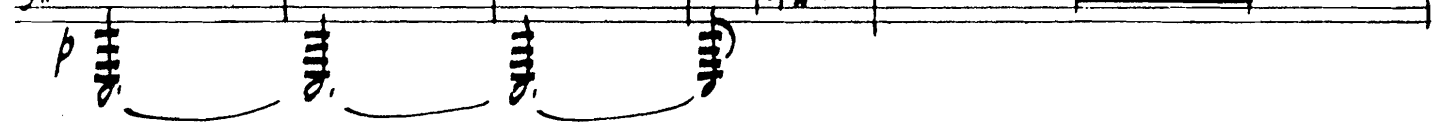
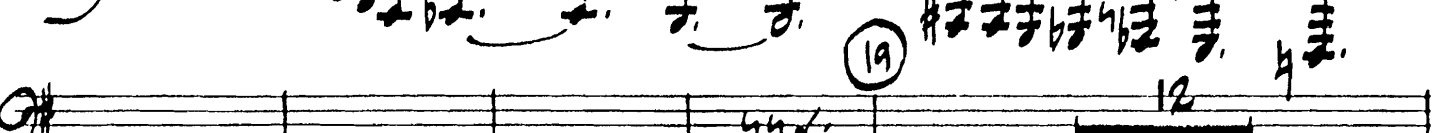
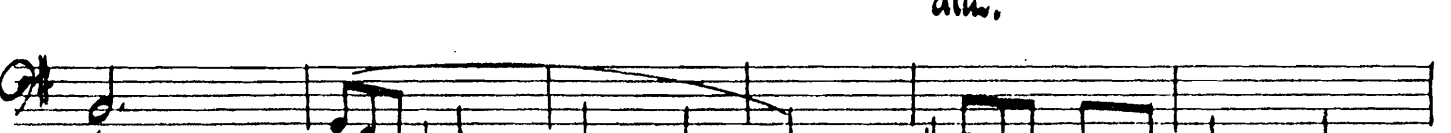
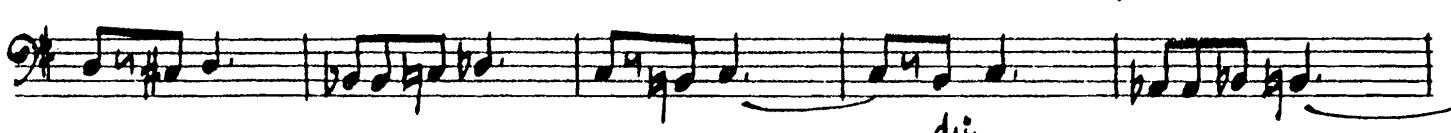
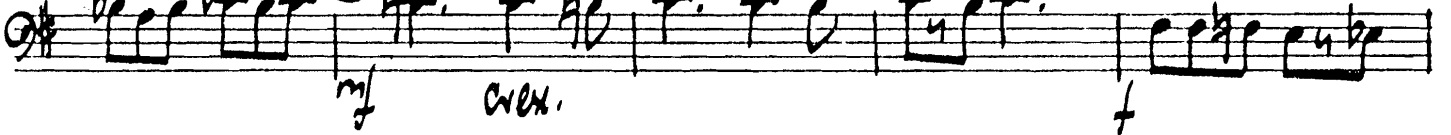
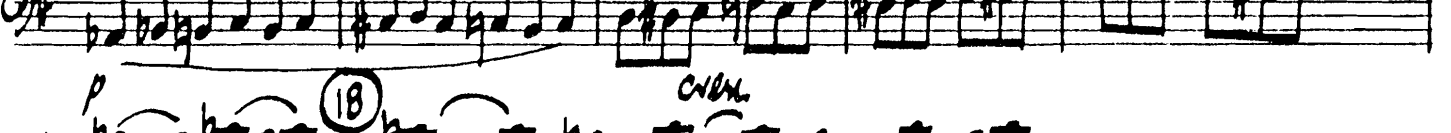
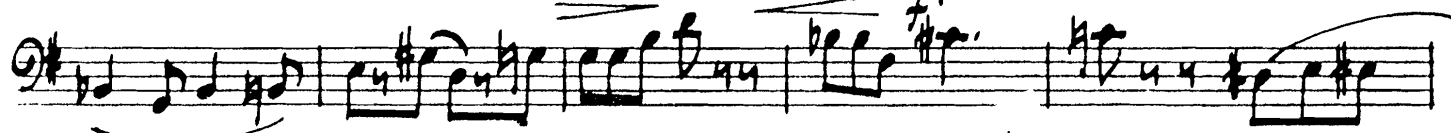
5

Allegro Leggero  $\text{♩} = 160$

17



16



In Österreich zu beziehen bei:  
**ABEL**  
MUSIKVERLAG  
A-6884 Dornbirn - Fax 05510/7005 - E-Mail: info@abel.at  
Bestell-Hotline: 05510/7000  
Alles online unter: [www.abel.at](http://www.abel.at)