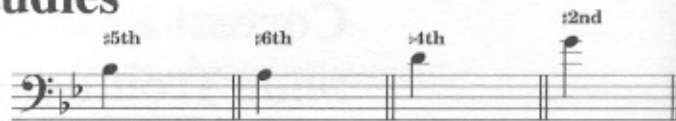


Table of Contents

About Jean Baptiste Arban.....	4
About Simone Mantia.....	4
About Charles L. Randall	4
About Alan Raph.....	4
Introductory Remarks	5
Notes and Listings for the Accompaniment CD	6
Instructive Comments	7
Special Baritone Horn Techniques and Considerations	9
Overtones, Slide Placement and F Attachment.....	10
Diagram of the Trombone.....	11
Diagram of the Baritone and Valve Trombone	12
Correct Positions for Holding the Slide Trombone and Baritone	13
I. First Studies	
First Studies.....	14
Syncopation.....	29
Studies in Dotted Eighth and Sixteenth Notes	32
$\frac{6}{8}$ Meter	38
II. Studies for the Slur	45
III. Direction for Study of the Scales	71
Major Scales.....	73
Minor Scales	96
Chromatic Scales.....	98
Chromatic Triplets and Scale Fragments	103
IV. Ornaments	111
Preparatory Exercises for the Gruppetto.....	114
The Gruppetto (Turn).....	127
The Double Appoggiatura.....	133
Short Etudes	136
The Grace Note	137
The Portamento	140
The Trill.....	142
The Mordent.....	152
V. More Advanced Studies	
Intervals.....	156
Octaves and Tenths	166
Triplets	167
Studies for Sixteenth Notes.....	174
Major and Minor Arpeggios.....	182
Dominant Seventh Arpeggios	190
Diminished Seventh Arpeggios.....	193
Cadenzas	198
VI. Double and Triple Tonguing	200
Double Tonguing.....	200
Triple Tonguing.....	211
The Slur in Double Tonguing.....	236
Fanfare Tonguing	243
VII. Solos	246
VIII. 14 Characteristic Studies	279
IX. 12 Fantaisies and Airs with Variations	309
X. Harmonious Blacksmith Variations	358

First Studies

According to the special directions provided throughout this edition by Simone Mantia to master accurate intonation, some positions must be slightly raised, which is indicated by a sharp symbol (#). Some are lowered, as indicated by the flat symbol (b). This process is to be used when near the respective intervals, instead of shifting distances:



The positions for trombone are shown above, and the fingering for valve instruments is shown below the notes.

1. *1st Pos.* *#5th* *4th* *3rd* *4th* *1st* *2nd* *1st* *#5th* *#6th* *2nd* *1st* *1st*

2. *1st Pos.* *4th* *2nd* *1st* *4th* *#6th* *2nd* *#5th* *1st* *6th* *3rd*

3. *4th* *3rd* *simile*

4. *simile*

5. *simile*

6. *simile*

The page contains six numbered musical exercises (1-6) in bass clef with a key signature of one flat. Each exercise consists of two staves of music. The top staff of each exercise shows notes with their positions (e.g., 1st Pos., #5th, 4th, 3rd, 4th, 1st, 2nd, 1st, #5th, #6th, 2nd, 1st, 1st) and some notes have a sharp symbol (>) above them. The bottom staff shows fingering numbers (0-4) and some notes have a sharp symbol (>) above them. Exercise 3 includes the word 'simile' and a '3' above a note. Exercise 4 includes 'simile' and a '3' above a note. Exercise 5 includes 'simile' and a '3' above a note. Exercise 6 includes 'simile' and a '3' above a note.