

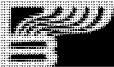
FULL CONDUCTOR SCORE  
Score Cat. #012-4388-01

BARNHOUSE CONCERT BAND SERIES

# The Toymaker's Workshop

Der Spielzeugmacher - Werkstatt

Rebecca Jarvis



**C.L. BARNHOUSE COMPANY®**

Music Publishers • Des Moines, IA 50377  
[www.barnhouse.com](http://www.barnhouse.com)

# THE TOYMAKER'S WORKSHOP

## Der Spielzeugmacher - Werkstatt

### INSTRUMENTATION

Full Conductor Score .....	1
1st Flute .....	5
2nd Flute .....	5
Oboe .....	2
1st Bb Clarinet .....	6
2nd Bb Clarinet .....	6
Bb Bass Clarinet .....	2
Bassoon .....	2
1st Eb Alto Saxophone .....	3
2nd Eb Alto Saxophone .....	3
Bb Tenor Saxophone .....	2
Eb Baritone Saxophone .....	1
1st Bb Trumpet .....	5
2nd Bb Trumpet .....	5
F Horn .....	4
1st Trombone .....	3
2nd Trombone .....	3
Euphonium (Baritone) BC .....	2
Euphonium (Baritone) TC .....	2
Tuba .....	4
Bells, Slapstick .....	2
Xylophone .....	2
Timpani .....	1
Percussion 1: Snare Drum, Bass Drum, Whistles, Duck Calls, Bird Calls .....	4
Percussion 2: Crash Cymbals, Small Triangle, Temple Blocks, Ratchet, Whistles, Bike Horn .....	4

### PROGRAM NOTES

This charming holiday novelty piece opens with Bavarian-style folk melodies. As the picture of the workshop is painted by the melodies, we become acquainted with the "toys" as portrayed by all members of the band—winds, brass and percussion. Percussionists quickly alternate between traditional and accessory instruments while winds and brass add humor with glissandos, color punches, and imitation.

### REHEARSAL SUGGESTIONS

A tempo of 92 beats per minute for the quarter note is appropriate, but select a pace that permits clear definition and clean playing of the melodies. The primary melody is stated by the upper woodwinds and is restated with the addition of the trumpets. This melody is lively and articulations are important as they create proper style. At m. 25, be sure the melody contrasts with the previous phrases. This line should be legato and also played at a softer dynamic level. Later (m. 45) the initial melody reappears in variation with florid woodwind and xylophone figures.

The "toys" begin appearing at m. 61 after all the folk-style melodies have been introduced to the audience. If the band does not have some of the suggested percussion toys, please feel free to make appropriate substitutions. The piece concludes with a restatement of the primary melody by the full band with a fun-to-play countermelody in the horns and alto saxophones with percussion antics continuing to the end.

I hope you enjoy **The Toymaker's Workshop**. Glücklich beim spielen!  
(Happy playing!)

- Rebecca Jarvis

### CD Recording Available



WFR384

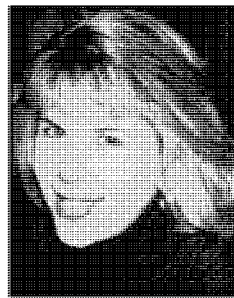
#### QUEST TO THE SUMMIT

*Washington Winds,*  
**Edward Petersen, conductor**

**CONTENTS:** *Celebration and Tribute (James Swearingen), Snow In A Silent Wood*

*(Jonathan McBride), Gallant Zouaves March (Karl L. King / arr. Andrew Glover), The Keystone (Robert W. Smith), On The Banks... (Matt Conaway), The Toymaker's Workshop (Der Spielzeugmacher-Werkstatt)-(Rebecca Jarvis), Temple Of The Gods (Sergius Taneiev / arr. Andrew Glover), Parade of the Tall Ships (Jay Chattaway), The New Colonial March (Robert B. Hall / arr. Andrew Glover), Quest To The Summit (Benjamin Yeo), Sheep May Safely Graze (J. S. Bach / arr. Alfred Reed), Beyond The Western Sky (Ed Huckeby), Czardas (Vittorio Monti / arr. Andrew Glover), A Bayside Portrait (Robert Sheldon), Kinizsi Hungarian March (Julius Fucik), At A Dixieland Jazz Funeral (Jared Spears)*

### ABOUT THE COMPOSER



Rebecca Jarvis received her B. A. in Music Education from Gustavus Adolphus College in Minnesota. She also holds a Masters of Arts in Education from Hamline University in St. Paul. She has been a middle school and high school band director for the past 25 years, teaching in public schools in Minnesota and Texas. Both her middle school and high school band programs earned state and regional awards. She lives in Rochester, Minnesota and enjoys composing for the concert band and smaller instrumental ensembles.

# THE TOYMAKER'S WORKSHOP

Der Spielzeugmacher-Werkstatt

Rebecca Jarvis

Allegretto (♩ = 92)

1st & 2nd Flute  
Oboe  
1st B♭ Clarinet  
2nd B♭ Clarinet  
B♭ Bass Clarinet  
Bassoon  
1st E♭ Alto Saxophone  
2nd E♭ Alto Saxophone  
B♭ Tenor Saxophone  
E♭ Baritone Saxophone  
1st B♭ Trumpet  
2nd B♭ Trumpet  
F Horn  
1st Trombone  
2nd Trombone  
Euphonium (Baritone)  
Tuba  
Timpani (A♭, B♭, E♭, F)  
Bells, Slapstick  
Xylophone  
Percussion 1 (Snare Drum, Bass Drum, Whistles, Duck Calls, Bird Calls)  
Percussion 2 (Crash Cymbals, Sn. Triangle, Temple Blocks, Ratchet, Whistles, Bike Horn)

1 2 3 4 5 6 7 8

9

1st & 2nd Fl. *mf*

Ob. *mf*

1st Cl. *mf*

2nd Cl.

Bass Cl.

Bsn.

1st Alto Sax.

2nd Alto Sax.

Ten. Sax.

Bari. Sax.

9

1st Trpt. *mf*

2nd Trpt. *mf*

Hn.

1st Trom. *Cue: Hn.*

2nd Trom. *Cue: Hn.*

Euph. (Bar.)

Tuba

Timp. *mf*

Bells *mf*

Xylo.

Perc. 1 *p*

SM Triangle

Perc. 2 *mp* *mp*

9 10 11 12 13 14 15 16

17

1st & 2nd Fl. *mf* *mp*

Ob. *mp*

1st Cl. *mp*

2nd Cl. *mf* *mp*

Bass Cl. *mf*

Bsn. *mf*

1st Alto Sax. *mf*

2nd Alto Sax. *mf*

Ten. Sax. *mf*

Bari. Sax. *mf*

17

1st Trpt. *mf*

2nd Trpt. *mf*

Hn. *mf* *unis.* *mp*

1st Trom. *mf* *Play*

2nd Trom. *mf* *Play*

Euph. (Bar.) *mf*

Tuba *mf*

Timp. *mf*

Bells *mf*

Xylo. *mf*

Perc. 1 *mp*

Perc. 2 *f*

17 18 19 20 21 22 23 24

25

1st & 2nd Fl. *legato*

Ob. *legato*

1st Cl. *legato*

2nd Cl. *legato*

Bass Cl. *mp legato*

Bsn. *mp legato*

1st Alto Sax.

2nd Alto Sax.

Ten. Sax. *mp legato*

Bari. Sax. *mp legato*

25

1st Trpt. *mp legato*

2nd Trpt. *mp legato*

Hn. *legato*

1st Trom. *mp legato*

2nd Trom. *mp legato*

Euph. (Bar.) *mp legato*

Tuba *mp legato*

Timp.

Bells

Xylo.

Perc. 1 *on rims: pp*

Perc. 2

33

1st & 2nd Fl. *mf*

Ob. *mf*

1st Cl. *mf*

2nd Cl. *mf*

Bass Cl. *mf*

Bsn. *mf*

1st Alto Sax. *mf*

2nd Alto Sax. *mf*

Ten. Sax. *mf*

Bari. Sax. *mf*

33

1st Trpt. *mf*

2nd Trpt. *mf*

Hn. *mf*

1st Trom. *mf*

2nd Trom. *mf*

Euph. (Bar.) *mf*

Tuba *mf*

Timp.

Bells *f*

Xylo.

Perc. 1 *mp* *mf*

Perc. 2

1st & 2nd Fl. *a2* **45** *mp* *div.* *a2*

Ob. *mp*

1st Cl. *mp*

2nd Cl. *mp*

Bass Cl. *mp*

Bsn. *mp*

1st Alto Sax. *mp* Cue: 1st Alto Sax.

2nd Alto Sax. *mp*

Ten. Sax. *mp*

Bari. Sax. *mp*

**45**

1st Trpt.

2nd Trpt.

Hn.

1st Trom. *mp*

2nd Trom. *mp*

Euph. (Bar.) *mp*

Tuba *mp*

Timp.

Bells

Xylo. (light mallets) *mp*

Perc. 1

Perc. 2 Temple Blocks *mp*



53

53

1st & 2nd Fl. *mf* *div.* *a2*

Ob. *mf*

1st Cl. *mf*

2nd Cl. *mf*

Bass Cl. *mf*

Bsn. *mf*

1st Alto Sax. *mf*

2nd Alto Sax. *mf*

Ten. Sax.

Bari. Sax.

1st Trpt. *mf*

2nd Trpt. *mf*

Hn. *mf*

1st Trom. *mf*

2nd Trom. *mf*

Euph. (Bar.) *mf*

Tuba *mf*

Timp.

Bells *mf*

Xylo. *mf*

Perc. 1 *mf*

Perc. 2 *mf*

50 51 52 53 54 55 56 57

1st & 2nd Fl. *div.* *a2* **61** *div.* *f* *f*

Ob. *f* *f*

1st Cl. *f* *f*

2nd Cl. *f* *f*

Bass Cl.

Bsn.

1st Alto Sax. *f* *Play*

2nd Alto Sax. *f*

Ten. Sax.

Bari. Sax.

**61**

1st Trpt.

2nd Trpt.

Hn.

1st Trom. *f*

2nd Trom. *f*

Euph. (Bar.) *f*

Tuba *f*

Timp.

Bells (get Slapstick) *f*

Xylo. *f*

Perc. 1 *f*

Perc. 2 *f* Ratchet *f*

58 59 60 61 62 63 64 65 66 67

69

1st & 2nd Fl. *mf* *a2*

Ob. *f* *mf*

1st Cl. *p* *mp* *mf*

2nd Cl. *p* *mp* *mf*

Bass Cl. *mp* *mf*

Bsn. *f* *p* *mp* *mf*

1st Alto Sax. *mp* *mf*

2nd Alto Sax. *mp* *mf*

Ten. Sax. *mp* *mf*

Bari. Sax. *mp* *mf*

69

1st Trpt. *f* *mf*

2nd Trpt. *f* *mf*

Hn. *p* *mp* *mf*

1st Trom. *f* *gliss.* 5 *gliss.* 6 *mf*

2nd Trom. *f* *gliss.* 5 *gliss.* 6 *mf*

Euph. (Bar.) *p* *mp* *mf*

Tuba *mp* *mf*

Timp. *f* *mp* *mf*

Bells *f* *Slapstick*

Xylo. *mf*

Perc. 1 *mf*

Perc. 2

77

1st & 2nd Fl. *div.* *f*

Ob. *f*

1st Cl. *div.* *f*

2nd Cl. *f*

Bass Cl. *f*

Bsn. *f*

1st Alto Sax. *f*

2nd Alto Sax. *f*

Ten. Sax. *f*

Bari. Sax. *f*

77

1st Trpt. *div.* *f* *unis.*

2nd Trpt. *f*

Hn. *f*

1st Trom. *f*

2nd Trom. *f*

Euph. (Bar.)

Tuba

Timp. *mf*

Bells *f*

Xylo. *f*

Perc. 1 *f*

Perc. 2 *f* Cr. Cyms. choke Short Whistle(s) Slide Whistle

77 78 79 80 81 82 83 84

85

1st & 2nd Fl. *ff*

Ob. *ff*

1st Cl. *ff*

2nd Cl. *ff*

Bass Cl. *f*

Bsn. *f*

1st Alto Sax. *ff*

2nd Alto Sax. *ff*

Ten. Sax. *ff*

Bari. Sax. *f*

85

1st Trpt. *ff*

2nd Trpt. *ff*

Hn. *ff*

1st Trom. *ff*

2nd Trom. *ff*

Euph. (Bar.) *ff*

Tuba *f*

Timp. *f*

Bells *f*

Xylo. *ff*

Perc. 1 Whistles, Duck Calls, Bird Calls Siren Whistle *fff*

Perc. 2 Acme Nightingale Whistle Bike Horn Cr. Cyms. choke

85 86 87 *f* 88 *ff* 89 *f* 90 91 92

93

1st & 2nd Fl. *mf*

Ob. *mf*

1st Cl. *mf*

2nd Cl. *mf*

Bass Cl. *mf*

Bsn. *mf*

1st Alto Sax. *mf*

2nd Alto Sax. *mf*

Ten. Sax. *mf*

Bari. Sax. *f*

93

1st Trpt. *f*

2nd Trpt. *f*

Hn. *mf* *div.* Cue: Hn.

1st Trom. *mf* Cue: Hn.

2nd Trom. *mf* Cue: Hn.

Euph. (Bar.)

Tuba *mf*

Timp. *mf*

Bells *mf*

Xylo.

Perc. 1 *mp* on rims: SM Triangle

Perc. 2 *mf*

101

1st & 2nd Fl.

Ob.

1st Cl.

2nd Cl.

Bass Cl.

Bsn.

1st Alto Sax.

2nd Alto Sax.

Ten. Sax.

Bari. Sax.

101

1st Trpt.

2nd Trpt.

Hn.

1st Trom.

2nd Trom.

Euph. (Bar.)

Tuba

Timp.

Bells

Xylo.

Perc. 1

Perc. 2

101 102 103 104 105 106 107 108

- 15 -

109

1st & 2nd Fl. *a2*

Ob.

1st Cl.

2nd Cl.

Bass Cl.

Bsn.

1st Alto Sax.

2nd Alto Sax.

Ten. Sax.

Bari. Sax.

109

1st Trpt.

2nd Trpt.

Hn.

1st Trom.

2nd Trom.

Euph. (Bar.)

Tuba

Timp.

Bells

Xylo.

Perc. 1

Perc. 2

Cr. Cyms.

Short Whistle(s)

Crash Cymbals

*fp* choke

*f* Siren Whistle

*fff*

109 110 111 112 113 114 115 116