

Unter dem Regenbogen

(Walzer)

$\text{♩} = 180$ 1. x tacet bis *)

Holz in B

Trpt. I

Flgh. 1./2.

Tenorhorn/
Bariton

Pos. 1./2./3.

Tuba

Holz

Trpt.

Flgh.

Ten./
Bar.

Pos.

Tub.

The image shows a musical score for a brass band. It consists of two systems of staves. The first system includes staves for Holz in B, Trpt. I, Flgh. 1./2., Tenorhorn/Bariton, Pos. 1./2./3., and Tuba. The second system includes staves for Holz, Trpt., Flgh., Ten./Bar., Pos., and Tub. The score is in 3/4 time with a tempo of 180 beats per minute. It features various musical notations such as notes, rests, and dynamic markings like 'p' (piano). A large, diagonal watermark reading 'Probepartitur' is overlaid across the entire score.

Partitur (6-zeilig)

①

Holz

Trpt.

Flgh.

Ten./
Bar.

Pos.

Tub.

p

*

Holz

Trpt.

Flgh.

Ten./
Bar.

Pos.

Tub.

mf

play

mf

mf

mf

mf

1.

Partitur (6-zeilig)

2. ②

Holz

Trpt.

Flgh.

Ten./
Bar.

Pos.

Tub.

f

f

f

1.x tacet

f

Holz

Trpt.

Flgh.

Ten./
Bar.

Pos.

Tub.

1.

Holz

Trpt.

Flgh.

Ten./
Bar.

Pos.

Tub.

2.

3.

This system contains the first six staves of the musical score. The instruments are Holz (Woodwinds), Trpt. (Trumpets), Flgh. (Flutes), Ten./Bar. (Tenor/Baritone), Pos. (Saxophones), and Tub. (Tubas). The score includes rehearsal marks 2 and 3. The music is in a key with one flat and a 4/4 time signature. The Holz part has complex rhythmic patterns with many beamed notes. The Trpt. part has long, sustained notes. The Flgh. part has a melodic line with some grace notes. The Ten./Bar. part has a steady, rhythmic accompaniment. The Pos. part has a bass line with many beamed notes. The Tub. part has a steady, rhythmic accompaniment.

Holz

Trpt.

Flgh.

Ten./
Bar.

Pos.

Tub.

mf

This system contains the next six staves of the musical score. The instruments are Holz (Woodwinds), Trpt. (Trumpets), Flgh. (Flutes), Ten./Bar. (Tenor/Baritone), Pos. (Saxophones), and Tub. (Tubas). The score includes a dynamic marking of *mf* (mezzo-forte). The music continues with similar instrumentation and style to the first system. The Holz part has complex rhythmic patterns with many beamed notes. The Trpt. part has long, sustained notes. The Flgh. part has a melodic line with some grace notes. The Ten./Bar. part has a steady, rhythmic accompaniment. The Pos. part has a bass line with many beamed notes. The Tub. part has a steady, rhythmic accompaniment.

4

Holz

Trpt.

Flgh.

Ten./ Bar.

Pos.

Tub.

1. + 2.x Tacet / 3.x Tutti

mf-f

1.x Tacet / 2.x Solo / 3.x Tutti

mf-f

x Solo / Tacet / 3.x Tutti

mf-f

mf-f

mf-f

Holz

Trpt.

Flgh.

Ten./ Bar.

Pos.

Tub.

mf-f

Holz

Trpt.

Flgh.

Ten./
Bar.

Pos.

Tub.

Holz

Trpt.

Flgh.

Ten./
Bar.

Pos.

Tub.

⑤

1.x Solo / 2 + 3.x Tacet bis *)

1.x tacet bis *) / 2.+ 3.x Play

Holz

Trpt.

Flgh.

Ten./
Bar.

Pos.

Tub.

3. x play

*)

*)

Holz

Trpt.

Flgh.

Ten./
Bar.

Pos.

Tub.

2.

Fine

mf

mf

mf

6

Holz

Trpt.

Flgh.

Ten./
Bar.

Pos.

Tub.

mf

mf

mf

Holz

Trpt.

Flgh.

Ten./
Bar.

Pos.

Tub.

f

f

f

f

f

f

TRIO
D.S. al Fine

1. Flügelhorn in B \flat
(B \flat Bugle 1)

Originalnoten der S.o.B.-Kapell
Unter dem Regenbogen
(Walzer)

Musik: Tobias Krehlik
Arr.: Lukas Bruckmeyer

$\text{♩} = 180$

p

1. x tacet

p

① Tenh.

p

play

mf

1.

2.

②

f

4

1.

2.

③ Tenh.



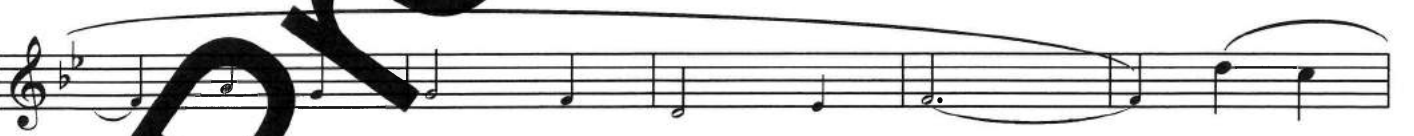
TRIO ④ 1.x Tacet / 2.x Solo / 3.x Tutti



⑤ 1.x Solo / 2.+ 3.x Tacet bis *



1. 2. Fine Holz ⑥



TRIO D.S. al Fine